

Word of the Day

Autumn Term 2024

Week 8 – 21st October 2024



'Words unlock the doors to a world of understanding...'

This Week's Words

Grasshopper

leader

medicine

flatten

measure

library

Shinobi

attach

advice

struggle

tedious

wondrous



VOCABULARY NINJA

Grasshopper (Tier 1)

leader

medicine

flatten

measure

library



VOCABULARY NINJA

Shinobi (Tier 2)

attach

advice

struggle

tedious

wonderous



VOCABULARY NINJA



Grasshopper Word of the Day

Word of the Day:

Pronunciation / Syllables

leader
(lead-er)

Word Class
(noun)

Definition:

The leader of a group of people or an organisation is the person who is in control of it or in charge of it.



Mr Lines chose a **leader** from each group.

Synonym:

chief

director

Antonym:

employee

follower

Prefix / Suffix:

-ship

-s

Rhyme:

reader

feeder

Link Word:

strong

effective



Grasshopper Word of the Day

Word of the Day:

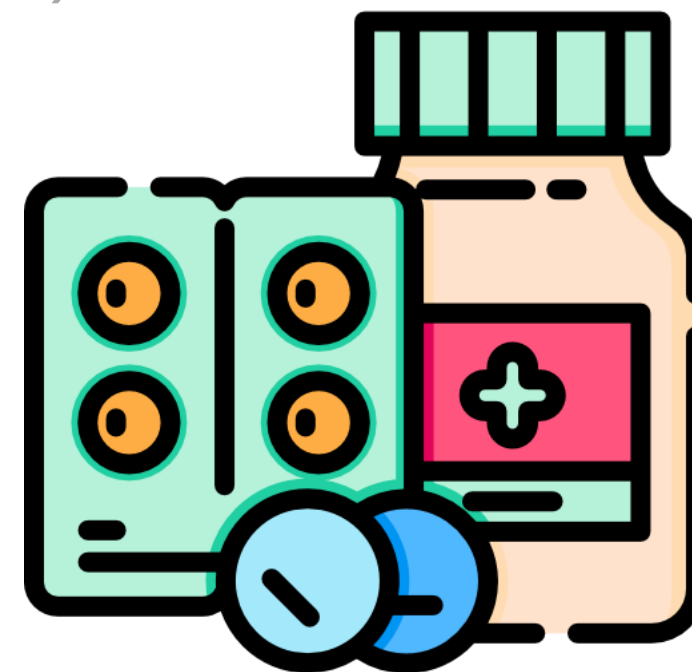
medicine
(med-i-cine)

Word Class
(noun)

Pronunciation / Syllables

Definition:

Medicine is
the treatment of illness and injuries by
doctors and nurses.



Miss Frank explained that **medicine** makes you feel better.

Synonym:

antibiotic

pill

Antonym:

disease

Prefix / Suffix:

bio-

-s

Rhyme:

Link Word:

effective

prescribe



Grasshopper Word of the Day

Word of the Day:

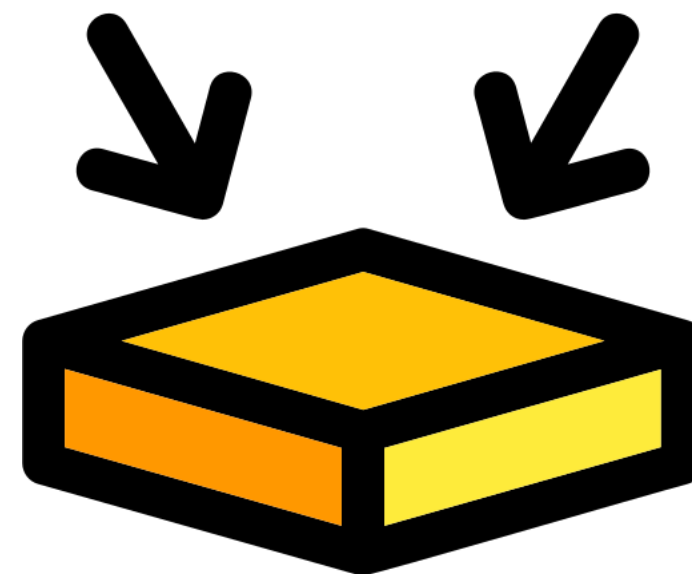
Pronunciation / Syllables

flatten
(*flat-ten*)

Word Class
(verb)

Definition:

If you flatten something or if it flattens, it becomes flat or flatter.



Kiaan tried to **flatten** the box to put in the recycling.

Synonym:

crush

smash

Antonym:

lift

raise

Prefix / Suffix:

-ed

-ing

Rhyme:

fatten

satin

Link Word:

gently

gradually



Grasshopper Word of the Day

Word of the Day:

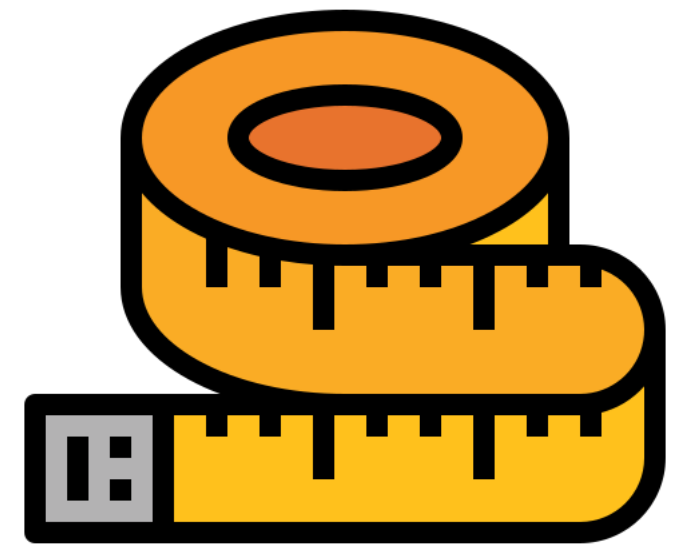
measure
(*meas-ure*)

Word Class
(verb / noun)

Pronunciation / Syllables

Definition:

If you measure a quantity that can be expressed in numbers, such as the length of something, you discover it using a particular instrument or device, for example a ruler.



The class used a ruler to **measure** the length of the desk.

Synonym:

compute

gauge

Antonym:

guess

neglect

Prefix / Suffix:

-ment

-ed

Rhyme:

leisure

pleasure

Link Word:

carefully

exactly



Grasshopper Word of the Day

Word of the Day:

Pronunciation / Syllables

library
(li-brar-y)

Word Class
(noun)

Definition:

A public library is a building where things such as books are kept for people to read and borrow.



Mr Lim took the class to the **library** to read.

Synonym:

study

Antonym:

Prefix / Suffix:

inter-

Rhyme:

Link Word:

quiet

private



Shinobi Word of the Day

Word of the Day:

Pronunciation / Syllables

attach
(at-tach)

Word Class
(adjective)

Definition:

If you attach something to an object, you join it or fasten it to the object.



Ms Cox told the class to **attach** their sheets.

Synonym:

fix
secure

Antonym:

loosen
unfix

Prefix / Suffix:

re-
-ed

Rhyme:

match
scratch

Link Word:

securely
carefully



Shinobi Word of the Day

Word Class
(noun)

Word of the Day:

advice
(ad-vice)

Pronunciation / Syllables

Definition:

If you give someone advice, you tell them what you think they should do in a particular situation.



Mr Hamm gave Ben **advice** on how to improve his story.

Synonym:

guidance

help

Antonym:

hinderance

obstruction

Prefix / Suffix:

-s

Rhyme:

price

device

Link Word:

helpful

wise



Shinobi Word of the Day

Word of the Day:

struggle
(*strug-gle*)

Word Class
(verb / noun)

Pronunciation / Syllables

Definition:

If you struggle to do something, you try hard to do it, even though other people or things may be making it difficult for you to succeed.



Sam continued to **struggle** with the math problem.

Synonym:

battle

strife

Antonym:

agree

neglect

Prefix / Suffix:

-s

-ed

Rhyme:

smuggle

juggle

Link Word:

fiercely

desperately



Shinobi Word of the Day

Word of the Day:

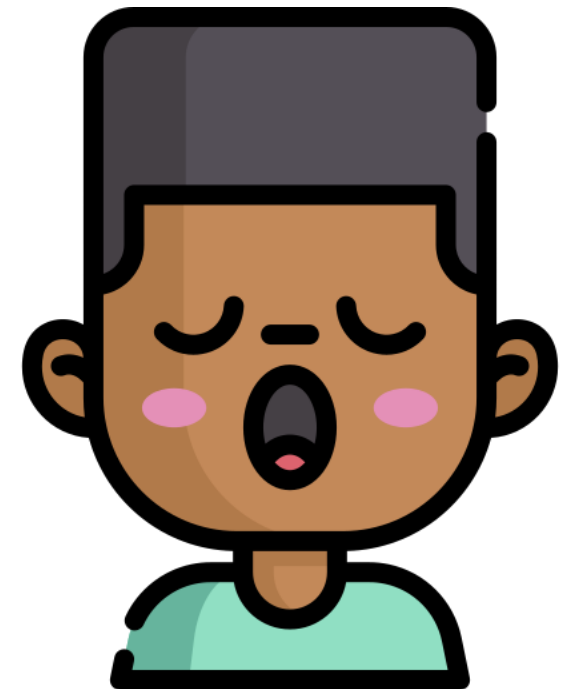
tedious
(te-di-ous)

Word Class
(adjective)

Pronunciation / Syllables

Definition:

If you describe something such as a job, task, or situation as tedious, you mean it is boring and rather frustrating.



Jay found the homework **tedious**.

Synonym:

laborious

tiring

Antonym:

interesting

exciting

Prefix / Suffix:

-ly

-ness

Rhyme:

Link Word:

constantly

extremely



Shinobi Word of the Day

Word of the Day:

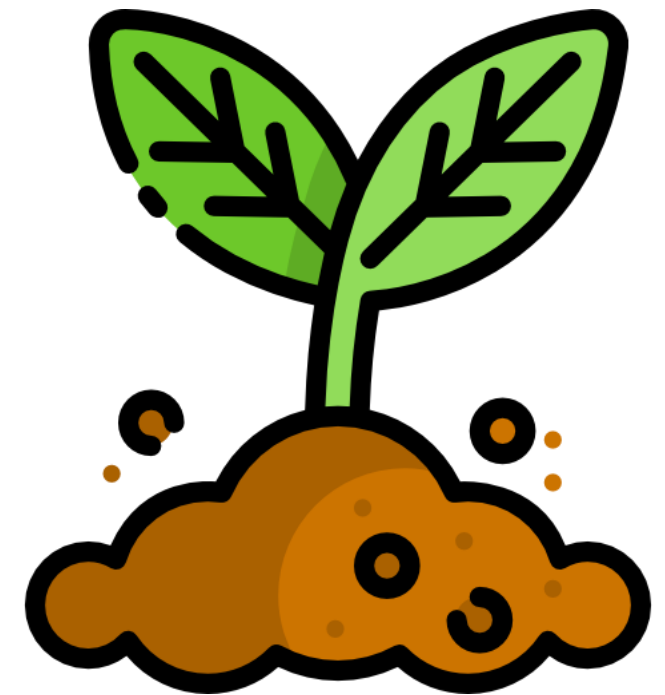
wondrous
(wond-rous)

Word Class
(adjective)

Pronunciation / Syllables

Definition:

If you describe something as wondrous, you mean it is strange and beautiful or impressive.



Mrs T explained about the **wondrous** beauty of nature.

Synonym:

amazing
fascinating

Antonym:

boring
ordinary

Prefix / Suffix

-ly
-ness

Rhyme:

Link Word:

truly
absolutely

Vocabulary Laboratory



Describe / Definition:

Use it in a sentence:

Focus Word (write below):

Word Class:

Synonyms:

(words with same / similar meaning)

Antonyms:

(words with opposite meaning)

Draw your sentence:

Rhymes:

(words that sound the same)

Link Words:

(Example: football = pitch, team, player)

Vocabulary Visualiser

Draw the
Grasshopper words
and bring them to life.



Word: leader

Word: flatten

Word: medicine

Word: measure



Vocabulary Visualiser

Draw the **Shinobi**
words and bring
them to life.



Word: attach

Word: tedious

Word: struggle

Word: wonderful



Matching Meanings

Draw lines from the **Grasshopper** words to their definitions.



Grasshopper Word

Grasshopper Definitions

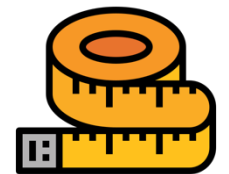
leader

A public *** is a building where things such as books, newspapers, videos, and music are kept for people to read, use, or borrow.



medicine

If you *** a quantity that can be expressed in numbers, such as the length of something, you discover it using a particular instrument or device, for example a ruler.



flatten

*** is
the treatment of illness and injuries by doctors and nurses.



measure

The *** of a group of people or an organisation is the person who is in control of it or in charge of it.



library

If you *** something or if it ***, it becomes *** or ***.



Matching Meanings

Draw lines from the **Shinobi** words to their definitions.



Shinobi Word

Shinobi Definitions

attach

If you *** something to an object, you join it or fasten it to the object.



advice

If you *** to do something, you try hard to do it, even though other people or things may be making it difficult for you to succeed.



struggle

If you give someone ***, you tell them what you think they should do in a particular situation.



tedious

If you describe something as ***, you mean it is strange and beautiful or impressive.



wonderous

If you describe something such as a job, task, or situation as ***, you mean it is boring and rather frustrating.





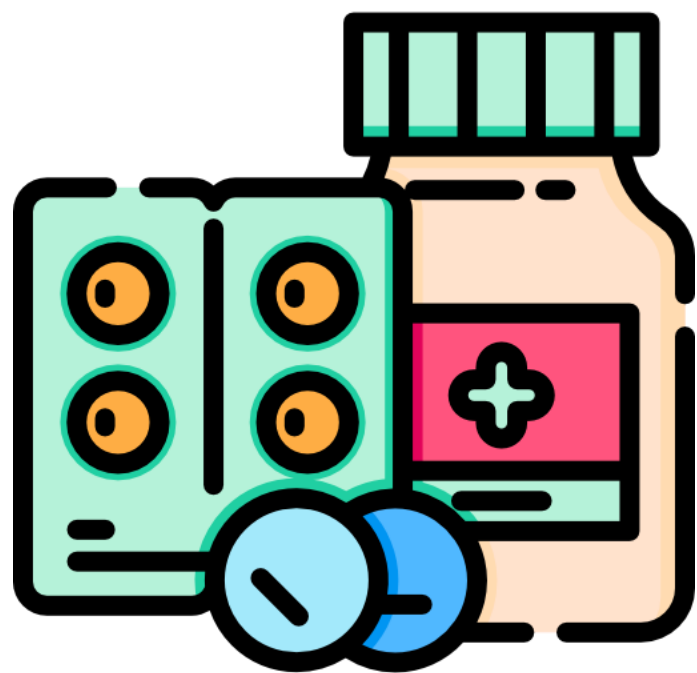
Display Slips

The following slides are for classroom display. As you teach each Word of the Day, words can be displayed in the classroom to enable pupils to use the taught vocabulary in an independent manner.





leader

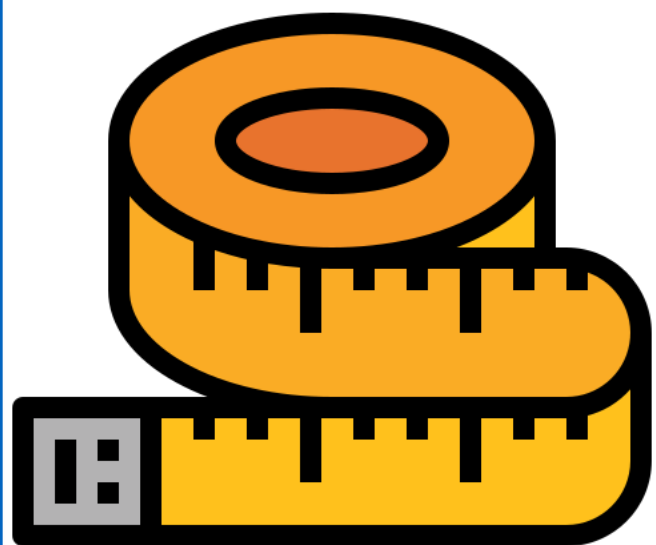
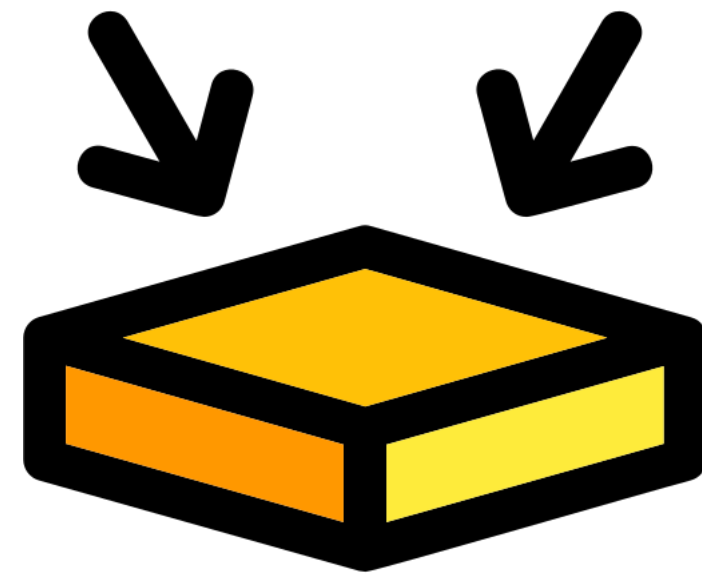


medicine





flatten



measure





library



attach





advice

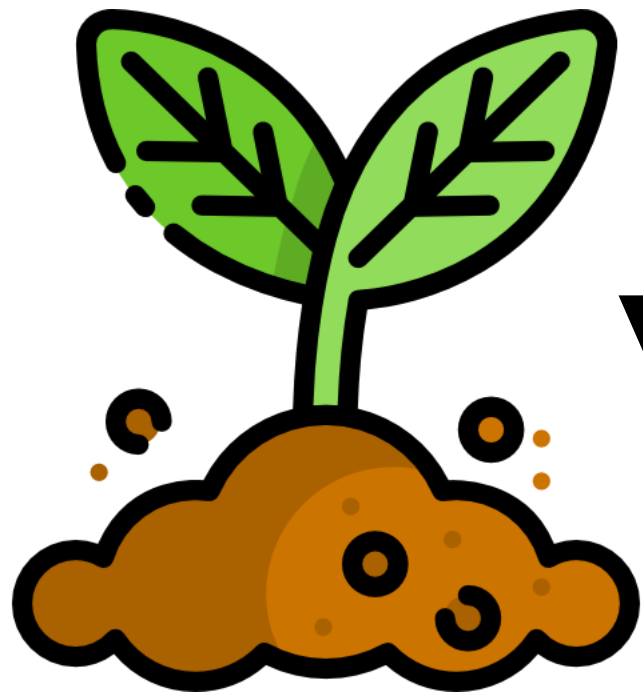
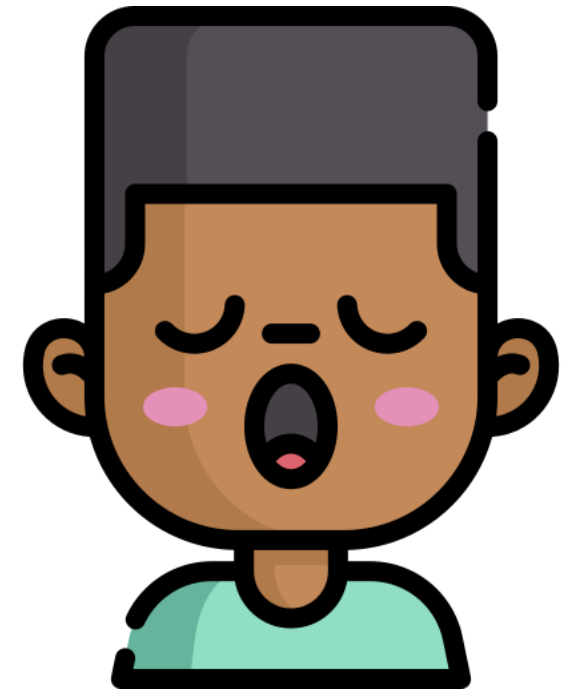


struggle





tedious



wonderous





Font Variation

The following display slips contain the same words, but have a more regular font, which have a more regular formation of 'a' and 'g'. Futura is the name of the font.




worried



opini

asure

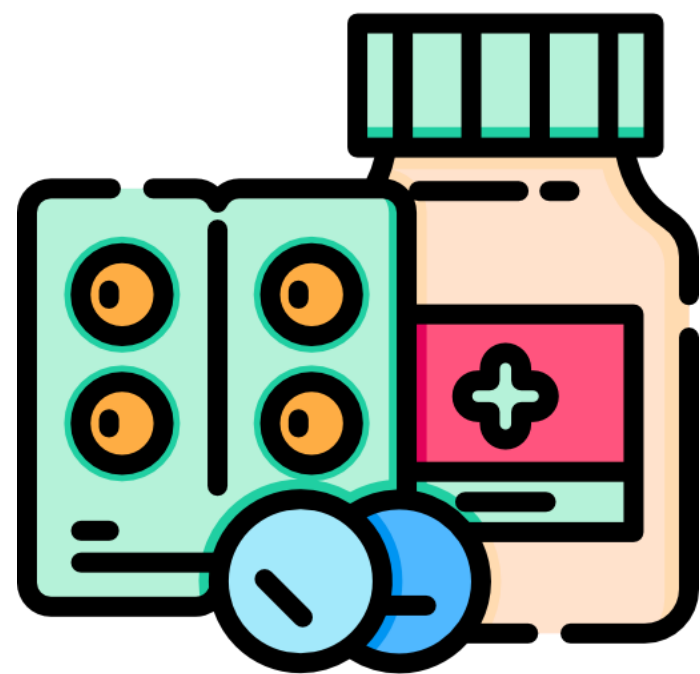


di





leader

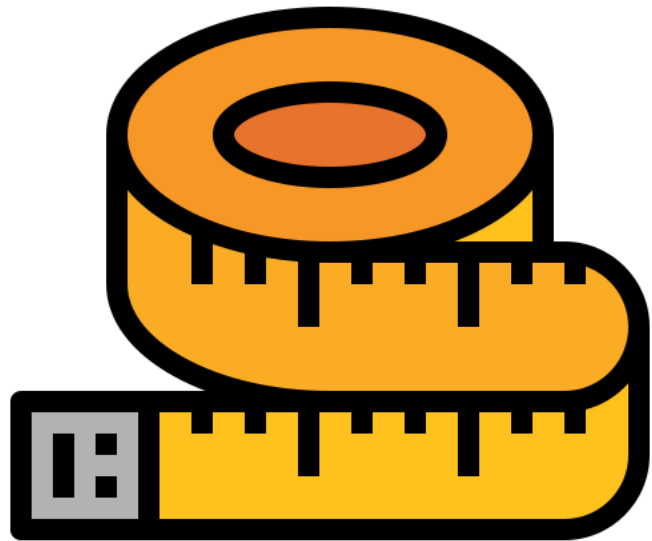
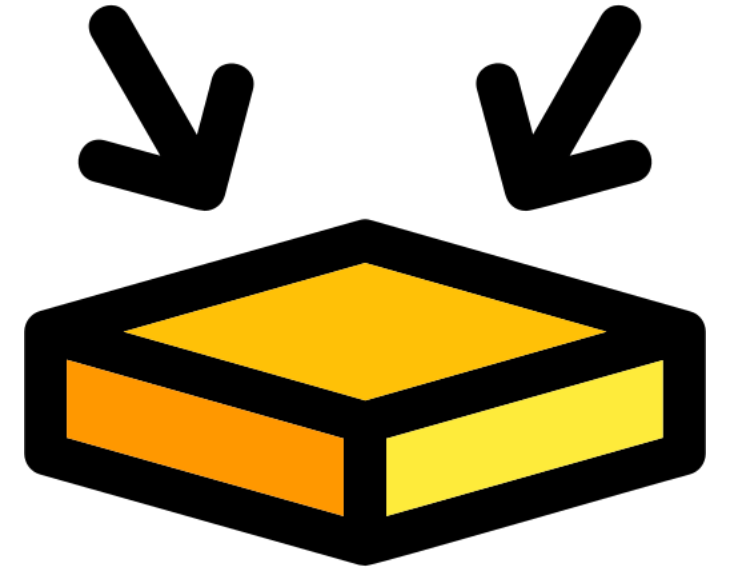


medicine





flatten



measure





library



attach





advice

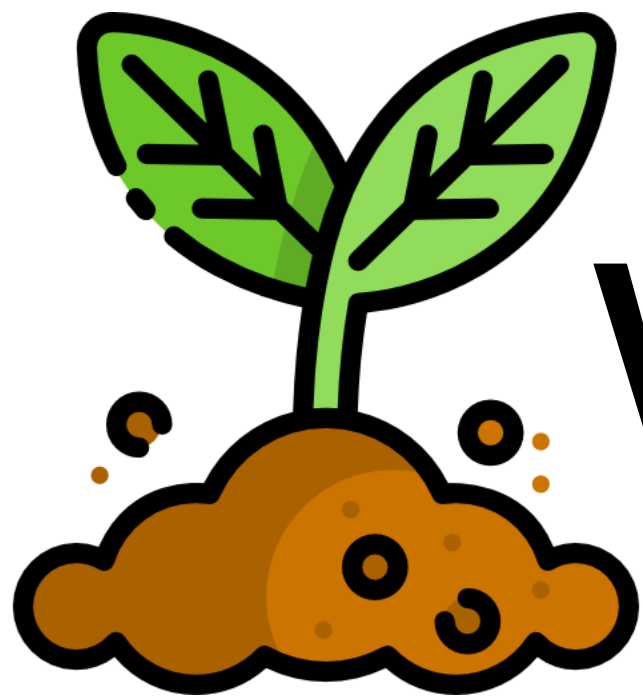
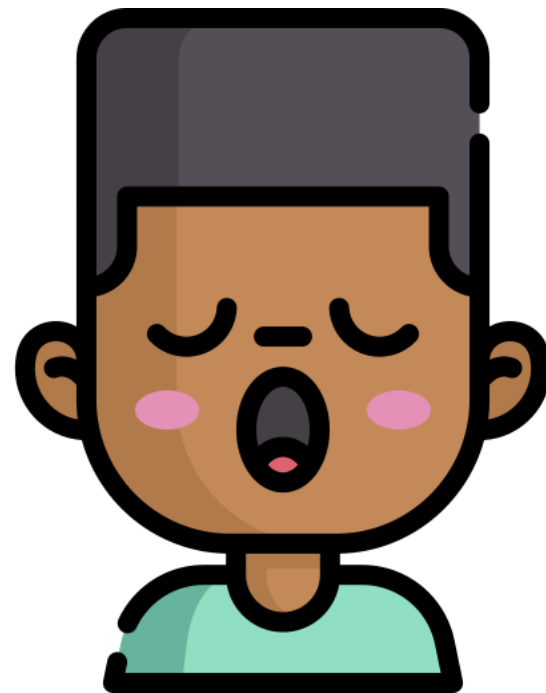


struggle





tedious



wonderous

